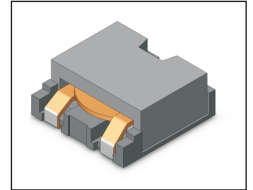


SMT Power Inductor

HMU1045, 1050 & 1080 Type

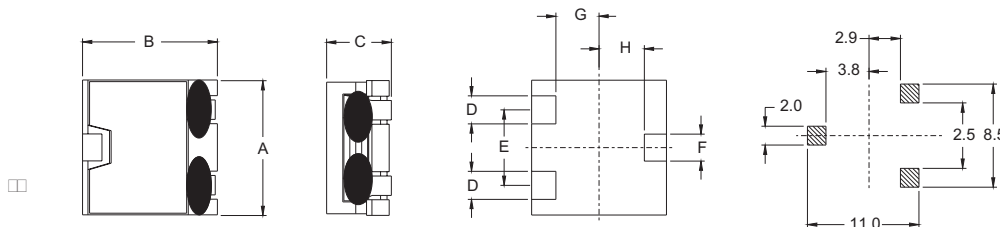
Features

- RoHS compliant.
- Low profile, SMD type.
- High current.
- Magnetic shielded.
- High energy storage and low DCR.
- Provided with embossed carrier tape packing.
- Ideal for power source circuits, DC-DC converter, DC-AC inverters inductor applications.
- In addition to the standard versions shown here, customized inductors are available to meet your exact requirements.



Mechanical Dimension :

RECOMMENDED PAD PATTERNS



UNIT : mm/inch
 A = 10.40 / 0.409 Max.
 B = 10.40 / 0.409 Max.
 D = 2.00 / 0.079
 E = 5.50 / 0.217
 F = 1.40 / 0.055
 G = 2.90 / 0.114
 H = 3.80 / 0.150

Electrical Characteristics : 25°C, 100KHz, 1V

PART NO.	L ¹ (uH)	Li (uH) MIN.	DCR (mΩ) MAX	I _{sat} ² (A _{dc})	I _{rms} ³ (A _{dc})	HEIGHT "C" (mm/inch) MAX.
HMU1045-0R7	0.7	0.50 ± 20%	1.7	20.0	20.0	4.5 / 0.177
HMU1050-0R5	0.5	0.40	1.6	25.0	25.0	5.0 / 0.197
HMU1050-0R6	0.6	0.48	1.6	17.0	25.0	5.0 / 0.197
HMU1050-1R0	1.0	0.80	2.9	15.0	17.0	5.0 / 0.197
HMU1050-1R5	1.5	1.20	6.0	16.0	11.5	5.0 / 0.197
HMU1050-1R5DL	1.5	1.20	3.8	13.5	14.0	5.0 / 0.197
HMU1050-1R5HS	1.5	1.20	8.2	22.0	9.5	5.0 / 0.197
HMU1050-1R8	1.8	1.44	6.0	15.0	11.5	5.0 / 0.197
HMU1080-1R5HS	1.5	1.20	3.5	20.0	14.5	8.0 / 0.315
HMU1080-2R2HS	2.2	1.76	3.5	14.0	14.5	8.0 / 0.315

1. Tolerance of inductance is ± 20%.
2. I_{sat} is the DC current which cause the inductance drop to Li.
3. I_{rms} is the DC current which cause the surface temperature of the part increase less than 45°C.
4. Operating temperature : -20°C to 105°C (including self-temperature rise).



DELTA ELECTRONICS, INC.

(TAOYUAN PLANT CPBG) 252, SAN YING ROAD, KUEISAN INDUSTRIAL ZONE, TAOYUAN SHIEN, 333, TAIWAN, R.O.C.
 TEL: 886-3-3591968; FAX: 886-3-3591991
<http://www.deltaww.com>